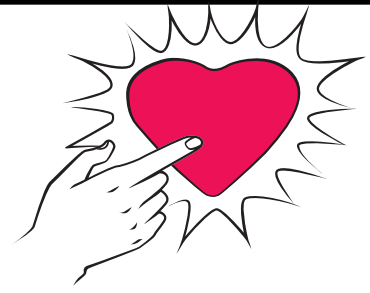


Teaching Heart



Developing Children's Social and Emotional Intelligence

Support & Guidance for Parents & Teachers

Time: 7:00 - 8:30 P.M.

**Thursday
April 17**

Building Resilient Kids Who Can Survive Anything

All parents want to know that their children will be able to survive and thrive through anything that they encounter in life. How do you develop your child's resiliency? Resiliency is a learned quality. Come learn how to support your child in going through, not around, life's challenges and how to use your child's most difficult experiences to develop their social and emotional intelligence.

**Wednesday
May 7**

The Price of Putting Too Much Pressure on Kids

Many children are living fast paced, hectic lives with a lot of pressure on them to achieve, produce, and be involved. Too much pressure on children can negatively impact their emotional and psychological development. Come learn about the effects that too much pressure and pushing can have on children, how to assess if there is too much pressure on your child, and what kind of support your child needs to learn and grow from life's normal pressure.

**All presentations will be held at the
Teaching Heart Center
1314 Main St., Suite 203 Louisville, Colorado**

**Visit www.teachingheart.com for more information and to
sign-up or call Tom McSheehy MSW, LSW at
303-955-2816. Space is limited.**